



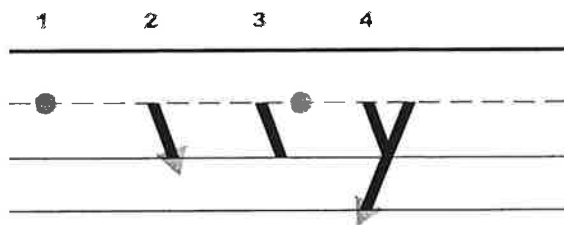
Fundations Letter Formation Guide

Say the verbal step-by-step guidelines while your child traces the **lower-case** letter with his or her finger. Try to do the week's letters every night. (Only do the lower-case letter.) Have your child color the picture.

Letter Formation for **y**

y is a plane line slide letter.

It starts on the (plane line) and (slides).

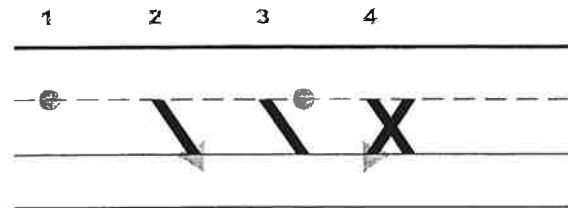


1. Point to the plane line.
2. Slide down to the grass line.
3. Pick up your pencil (finger) and leave a space and point to the plane line.
4. Slide back - all the way to the worm line.
5. Say y - yellow - /y/, have students repeat.

Letter Formation for **x**

x is a plane line slide letter.

It starts on the (plane line) and (slides).



1. Point to the plane line.
2. Slide down to the grass line.
3. Leave a space and point to the plane line.
4. Slide back to the grass line.
5. Say x - fox - /ks/, have students repeat.

