



Fundations Letter Formation Guide

UNIT
1

WEEK 12

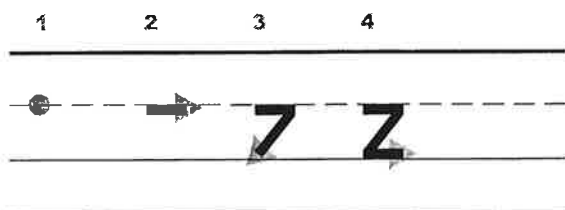
Say the verbal step-by-step guidelines while your child traces the **lower-case** letter with his or her finger. Try to do the week's letters every night. (Only do the lower-case letter.) Have your child color the picture.

Letter Formation for Z

z is a plane line slide letter, but it doesn't slide right away.

Where does it start? (On the plane line).

Before it slides, the z goes on the plane line.



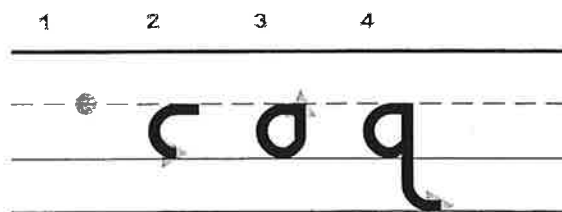
1. Point to the plane line.
2. Go on the plane line.
3. Slide back to the grass line.
4. Then go on the grass line.
5. Say z - zebra - /z/, have students repeat.

Letter Formation for q

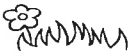
q is a plane line round letter.

It starts on the (plane line).

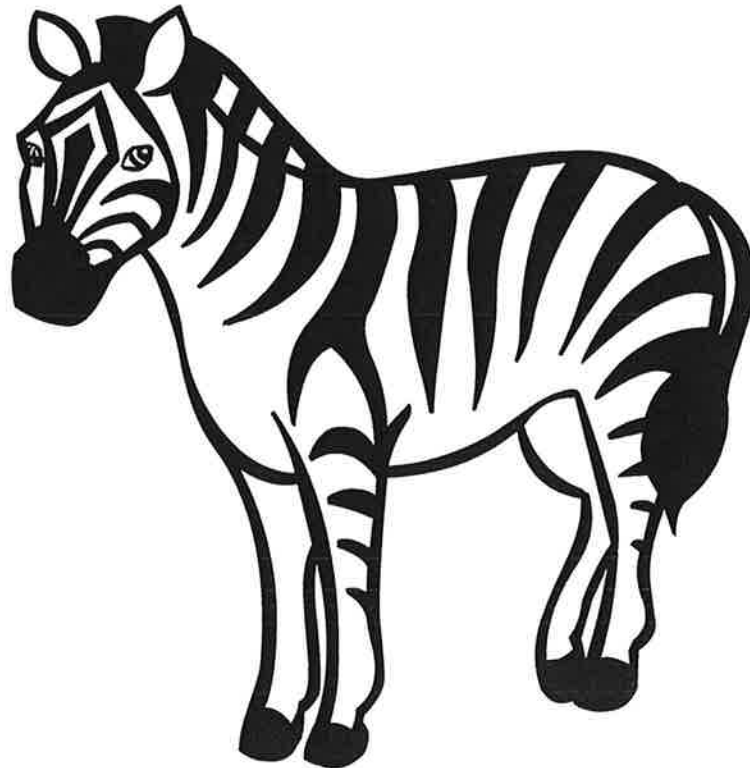
Remember that q is the chicken letter so in the end it wants to point up to its "buddy," u.

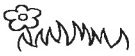


1. Point to the plane line.
2. Trace back and go down to the grass line around, back to the plane line.
3. Trace back down to the worm line,
4. and point up to his "buddy," u.
5. Say qu - queen - /kw/, have students repeat.



Zz





qu





***In Addition to the Letter Formation Activity
You Can Help Your Child Develop Letter Recognition***

Say, “**Find the letter** (name a letter).” Have your child point to it. When this seems easy, have your child point to and then name the letters. First do them in alphabetical order, then do them in mixed order with different fonts.

a	b	c	d	e	f	
g	h	i	j	k	l	
m	n	o	p	q	r	s
t	u	v	w	x	y	z

h	z	a	v	t	c	f
b	u	g	y	e	d	m
r	j	o	g	k	a	p
q	w	e	r	t	y	u
f	j	d	s	a	n	k